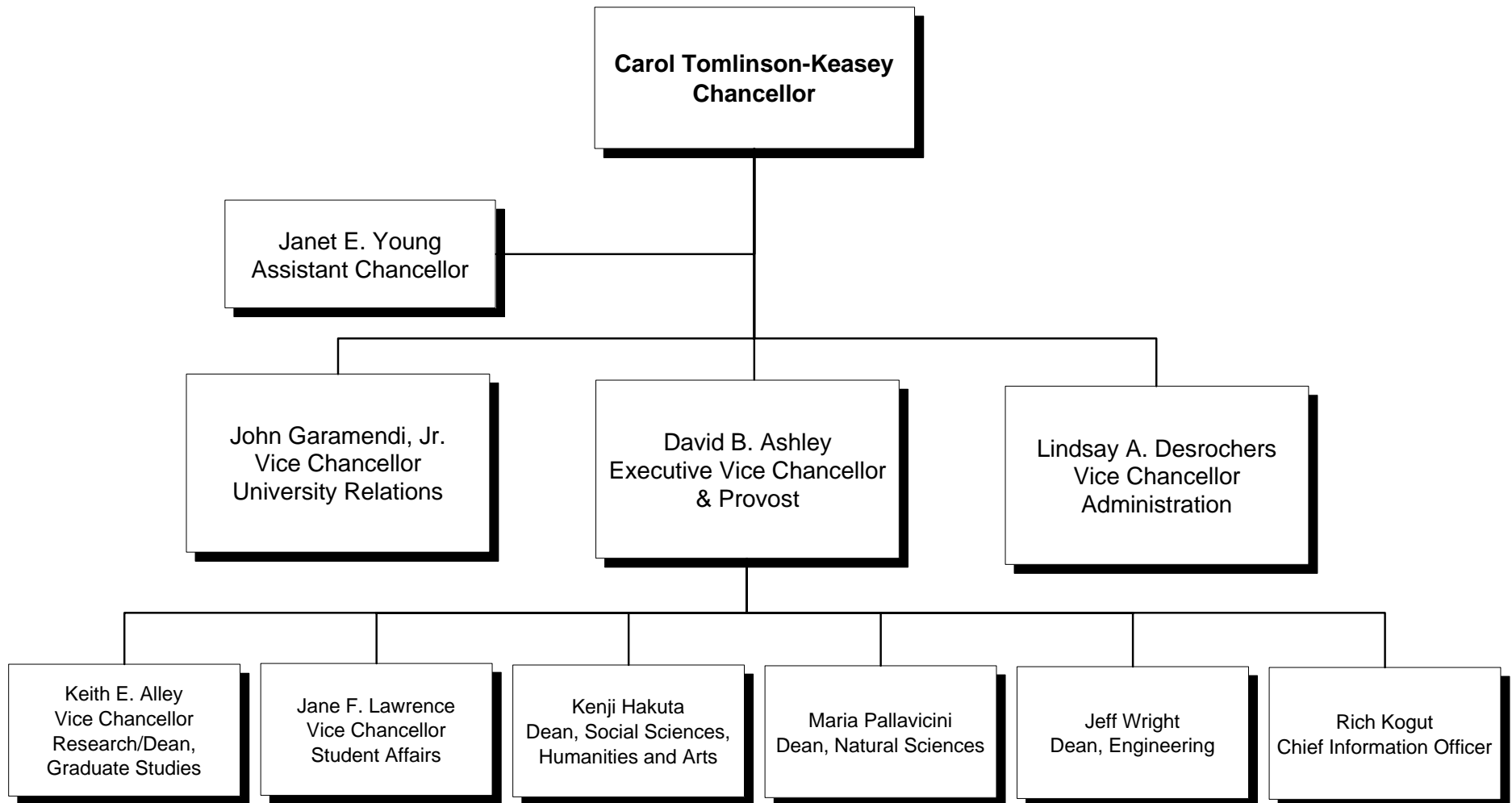


## **University of California, Merced**

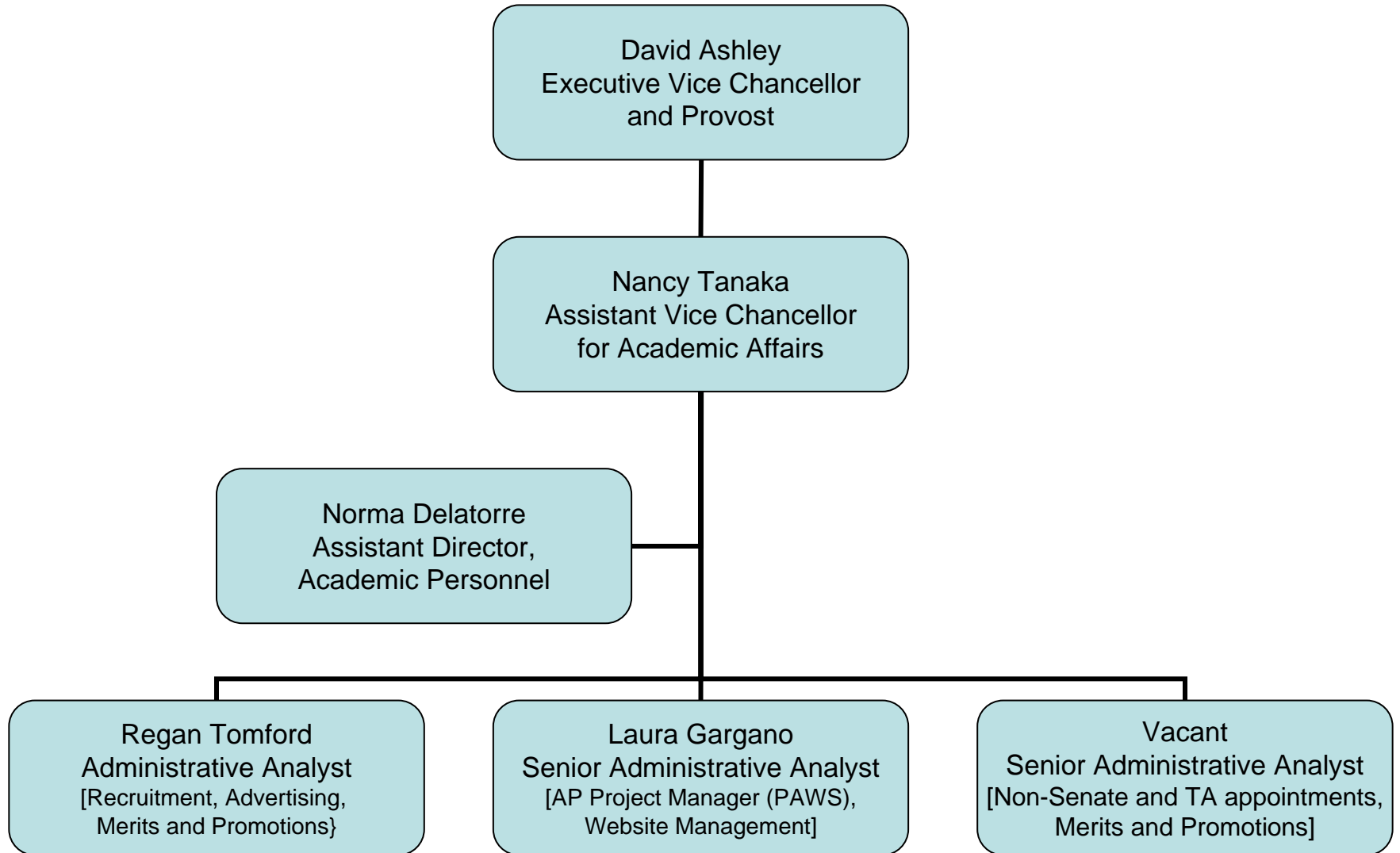
### **Institutional Organization Charts**

1. Chancellor's Cabinet
2. Academic Personnel
3. Administration
  - a. Facilities Management
  - b. Physical Planning, Design & Construction
4. Business & Financial Services
5. College One
6. Executive Vice Chancellor & Provost
7. Research & Graduate Studies
8. School of Engineering
9. School of Natural Sciences
10. School of Social Sciences, Humanities and Arts
11. University Relations

University of California, Merced  
Chancellor's Cabinet  
October 2005



# UC Merced Academic Personnel



# Vice Chancellor for Administration

Vice Chancellor for Administration

Jim Genes  
Chief of Staff/  
Special Assistant

Gail Benedict  
Exec. Asst.  
to VCA

Vacant, Admin Asst.



Denis Nepveu  
Budget Director

John O. White  
Capital Planning  
Director

Greg Kramp  
Human Resources  
Director

Dorothy Labbok  
Controller and  
Chief of Accounting

Rita Spaur  
Chief of Police

Elizabeth  
Capehart  
Contracts and RE  
Coordinator

Sonia Johnston  
Dir. Opps and Support  
Svcs

Division of Physical  
Planning  
Design and  
Construction  
(see attached)

Facilities Division  
(see attached)

Gary Bourg  
Alfredo Cierra

Gary Bourg

Cathy McAuley  
Sherry Coane  
Crystal Andersen  
Janis Patten  
John Daly

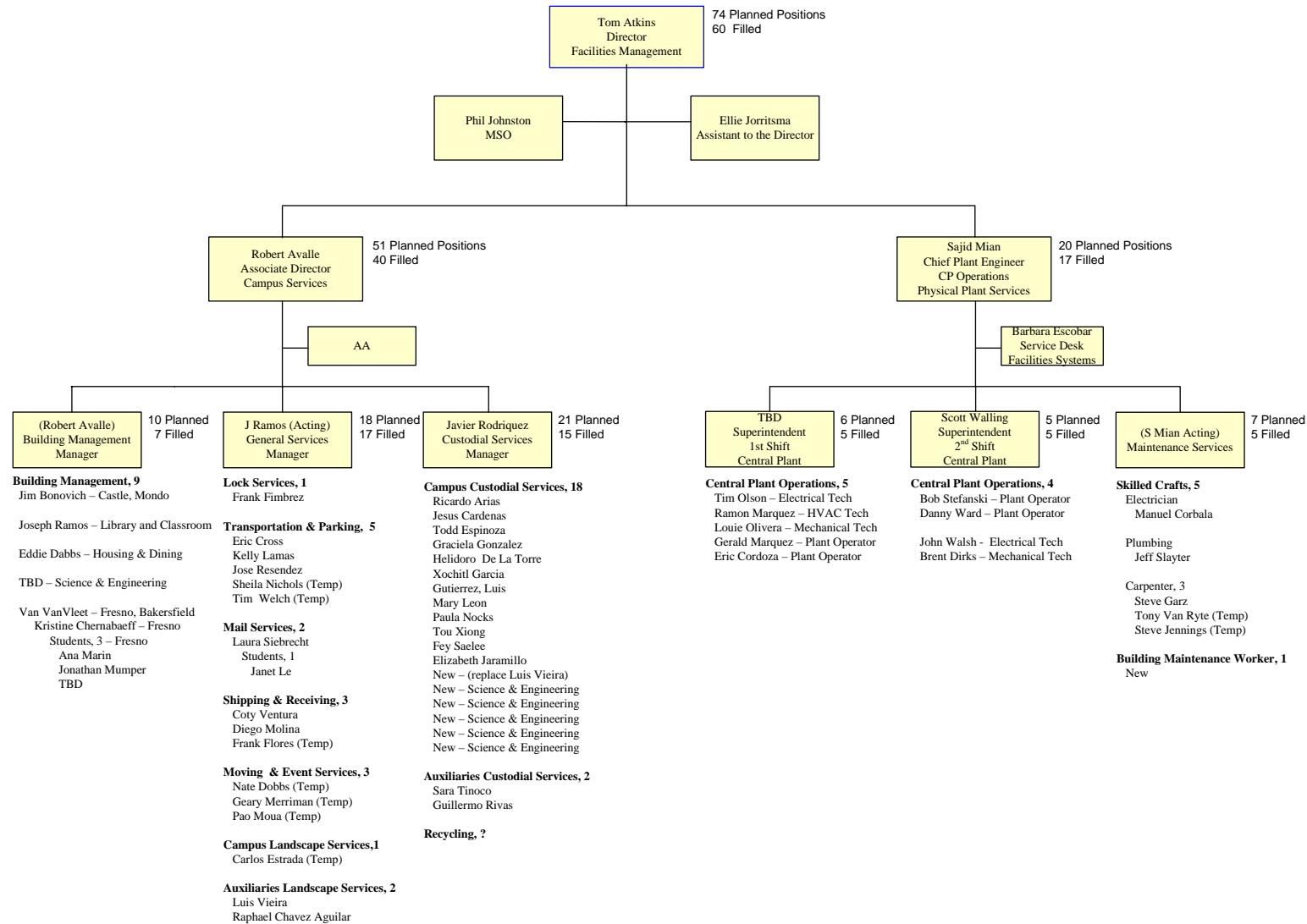
Mary Ann Fox  
Monir Ahmend  
Director  
Financial Svcs  
See attached chart

Ann Farr-Matthew  
Tamela Adkins  
Dispatchers  
Commander Mike Parrish  
Police Officers  
Community Service Officers

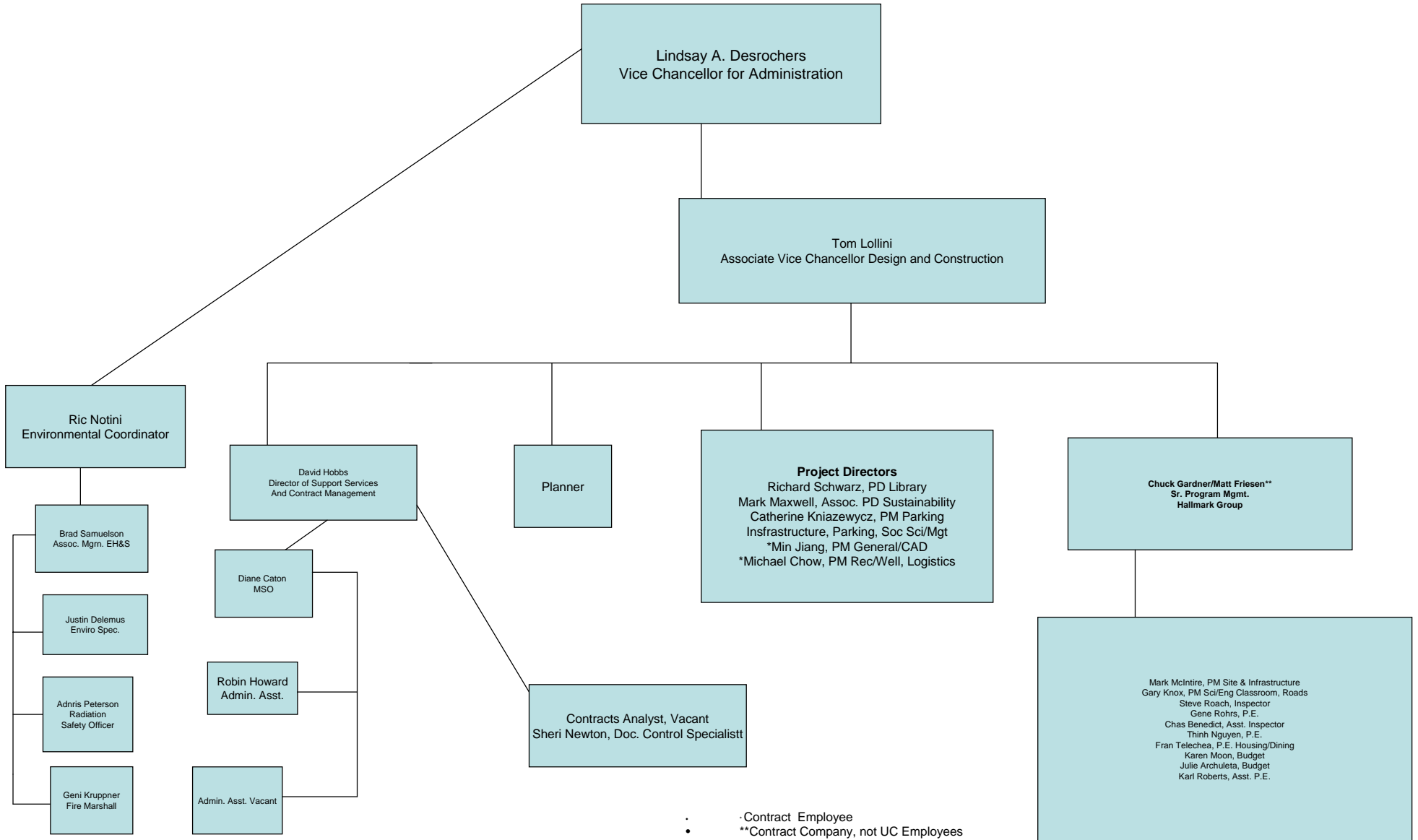
Marcie Barrick  
Payroll Asst.  
Becky Martinez

# UC Merced Facilities Management

November 2005



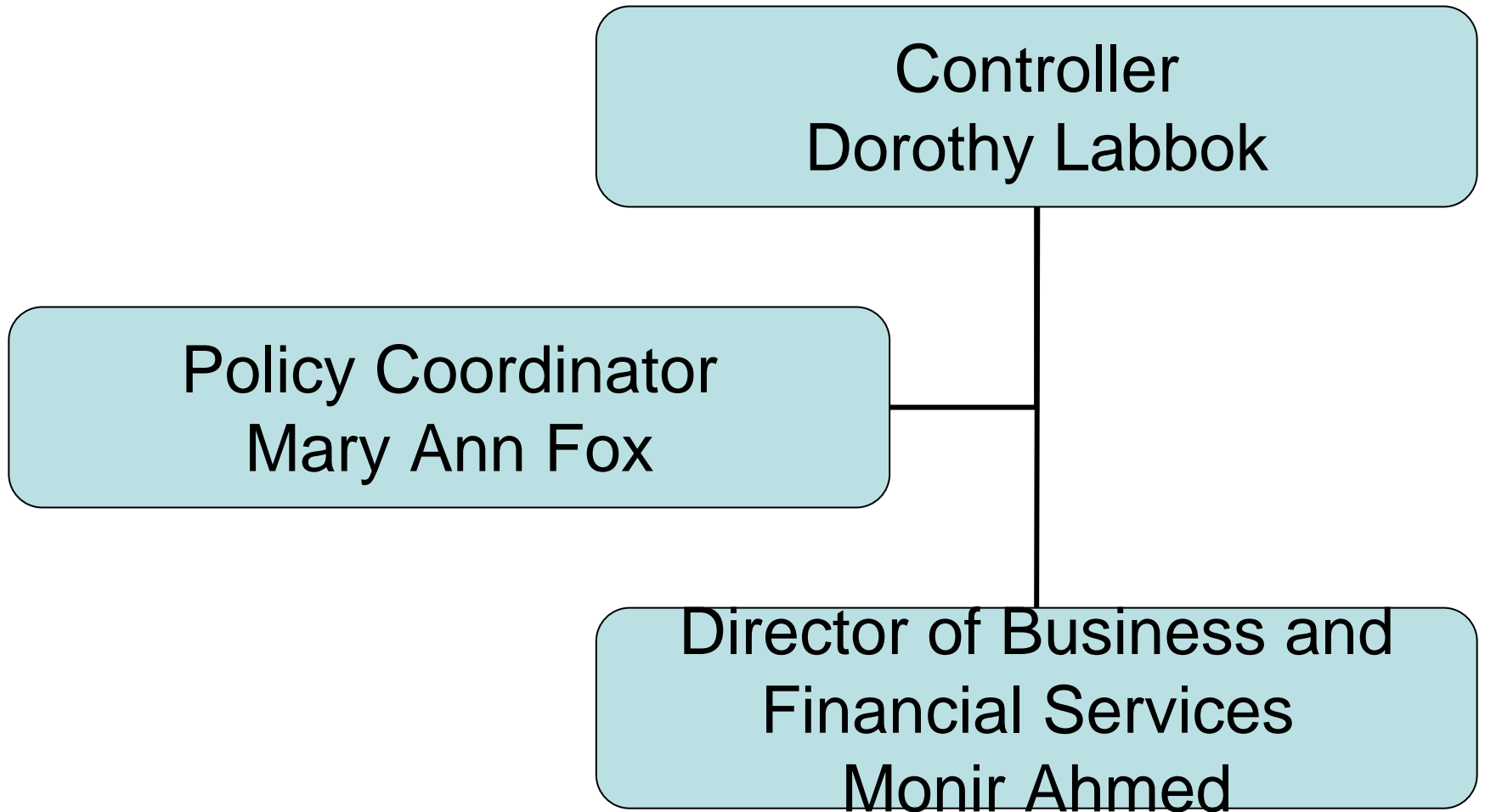
# Division of Physical Planning Design and Construction



. Contract Employee  
 • \*\*Contract Company, not UC Employees

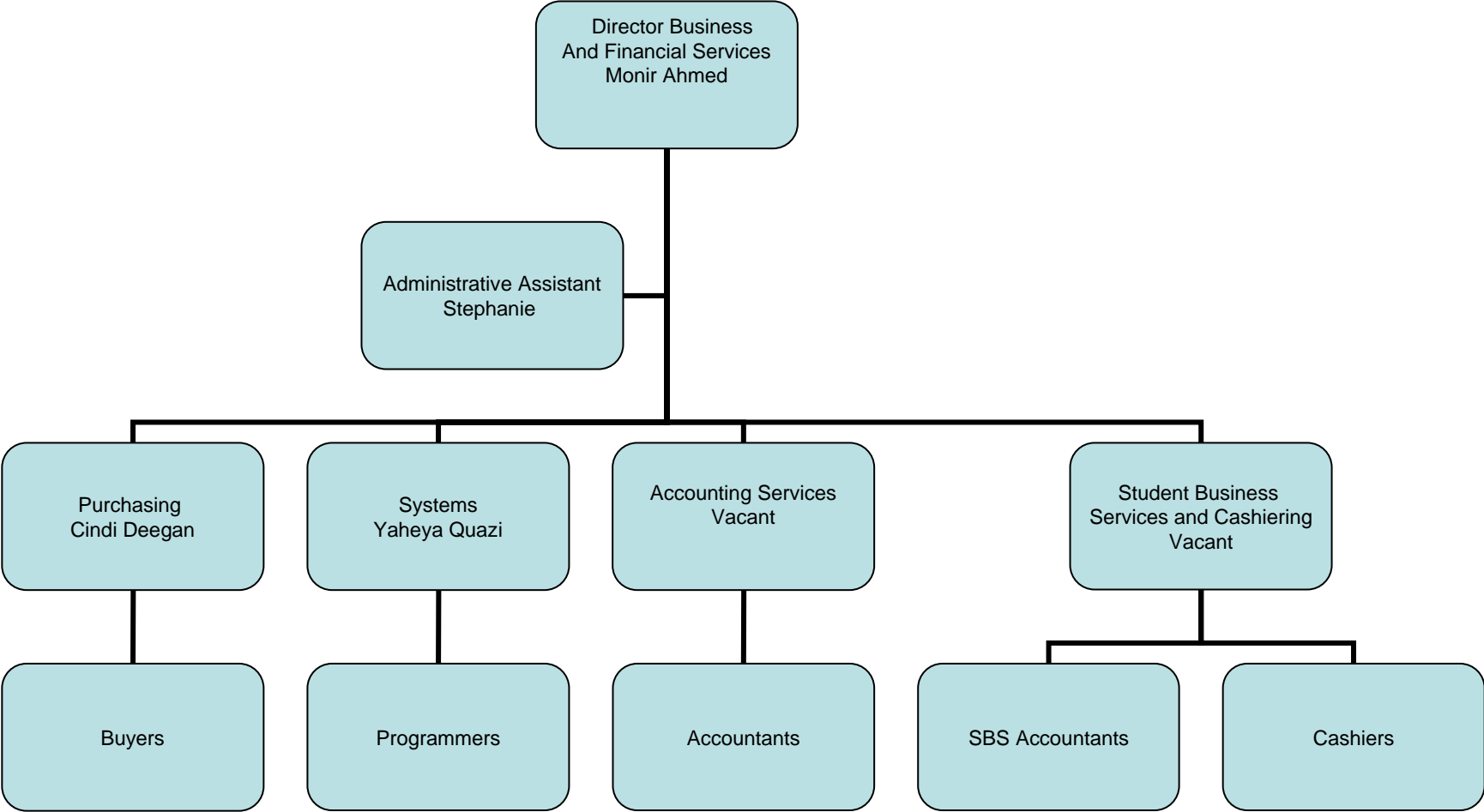
# UC Merced Controller's Department

October 2005



# UC Merced Business and Financial Services

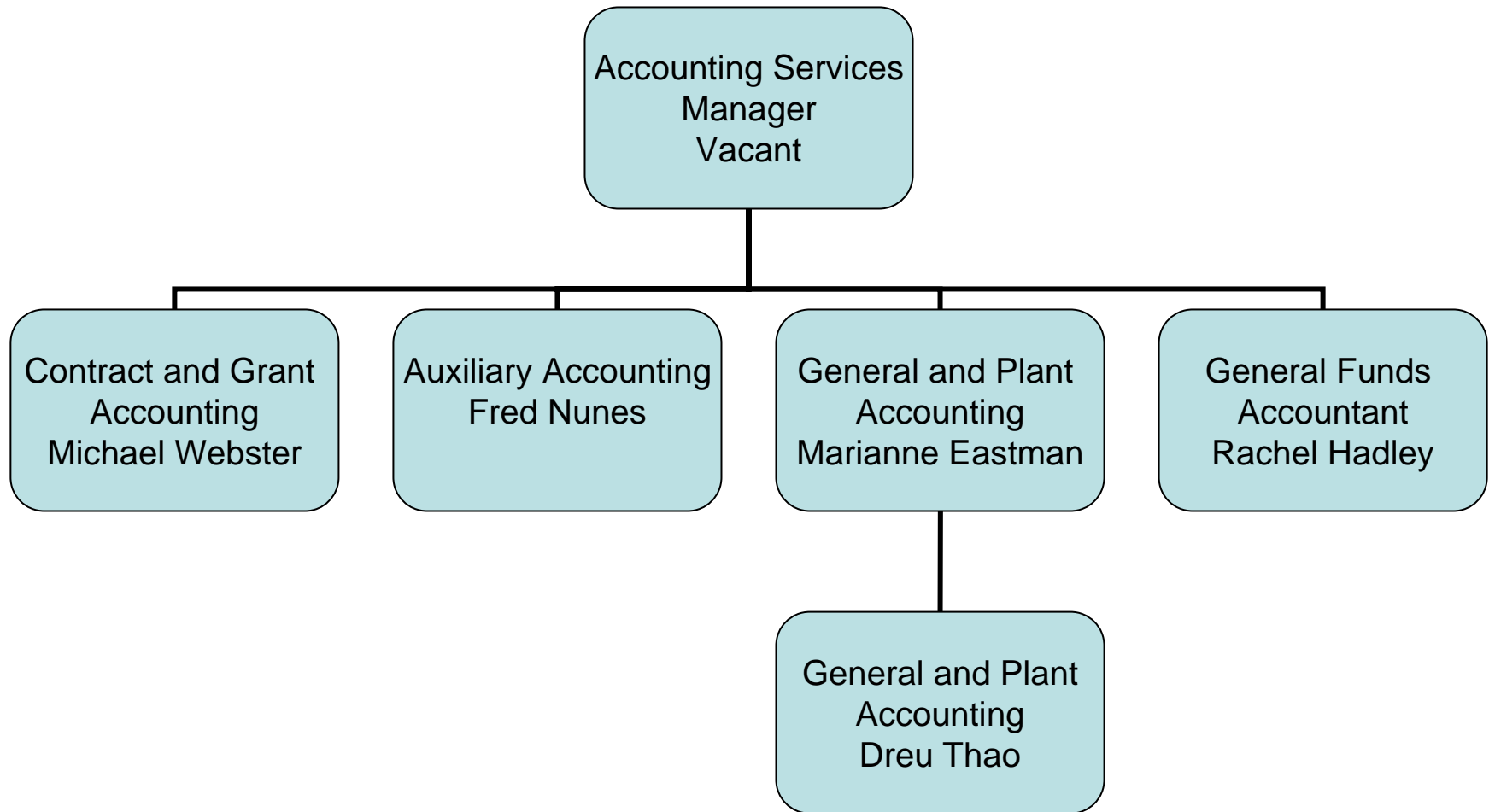
October 2005

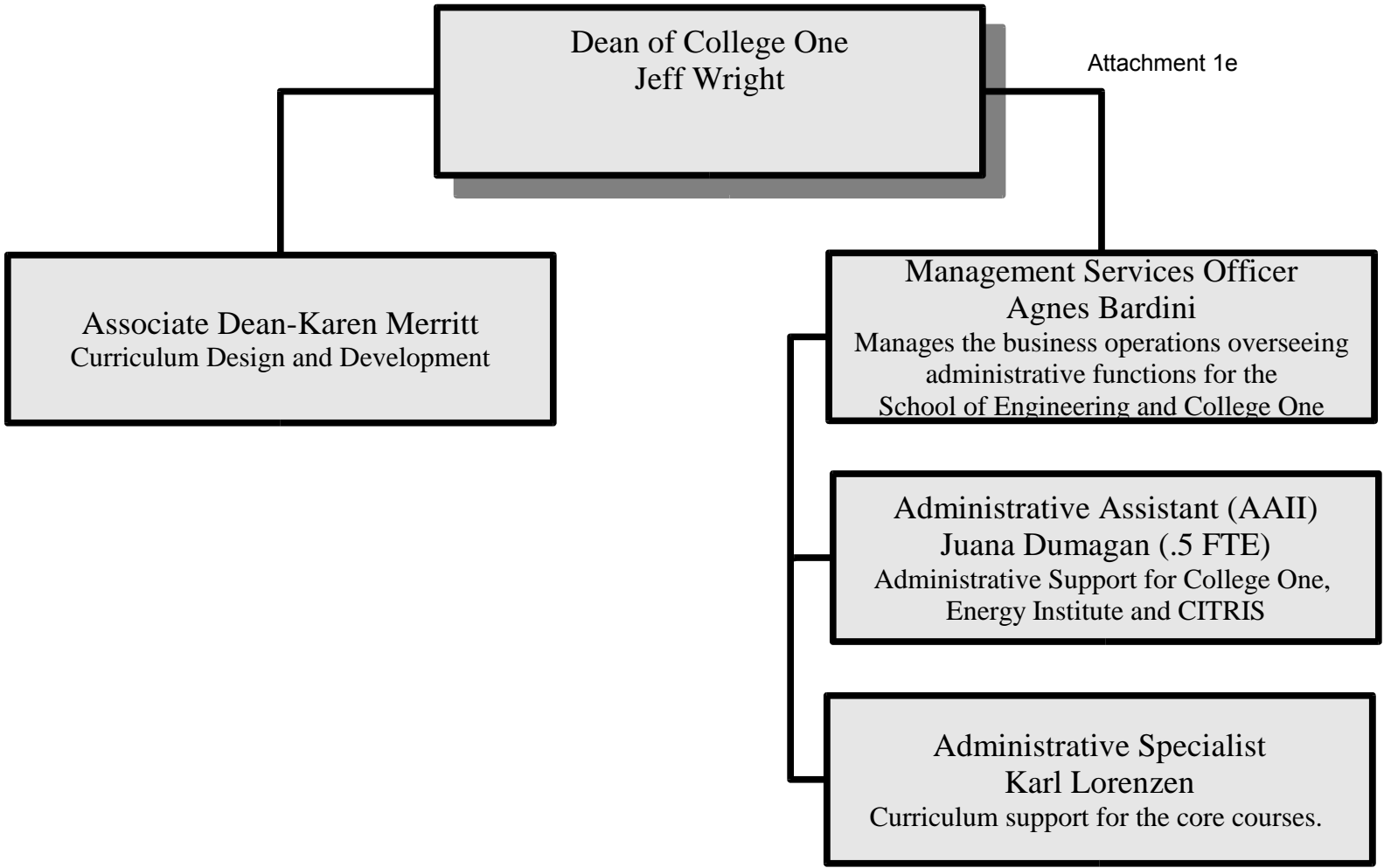




# UC Merced Accounting Services

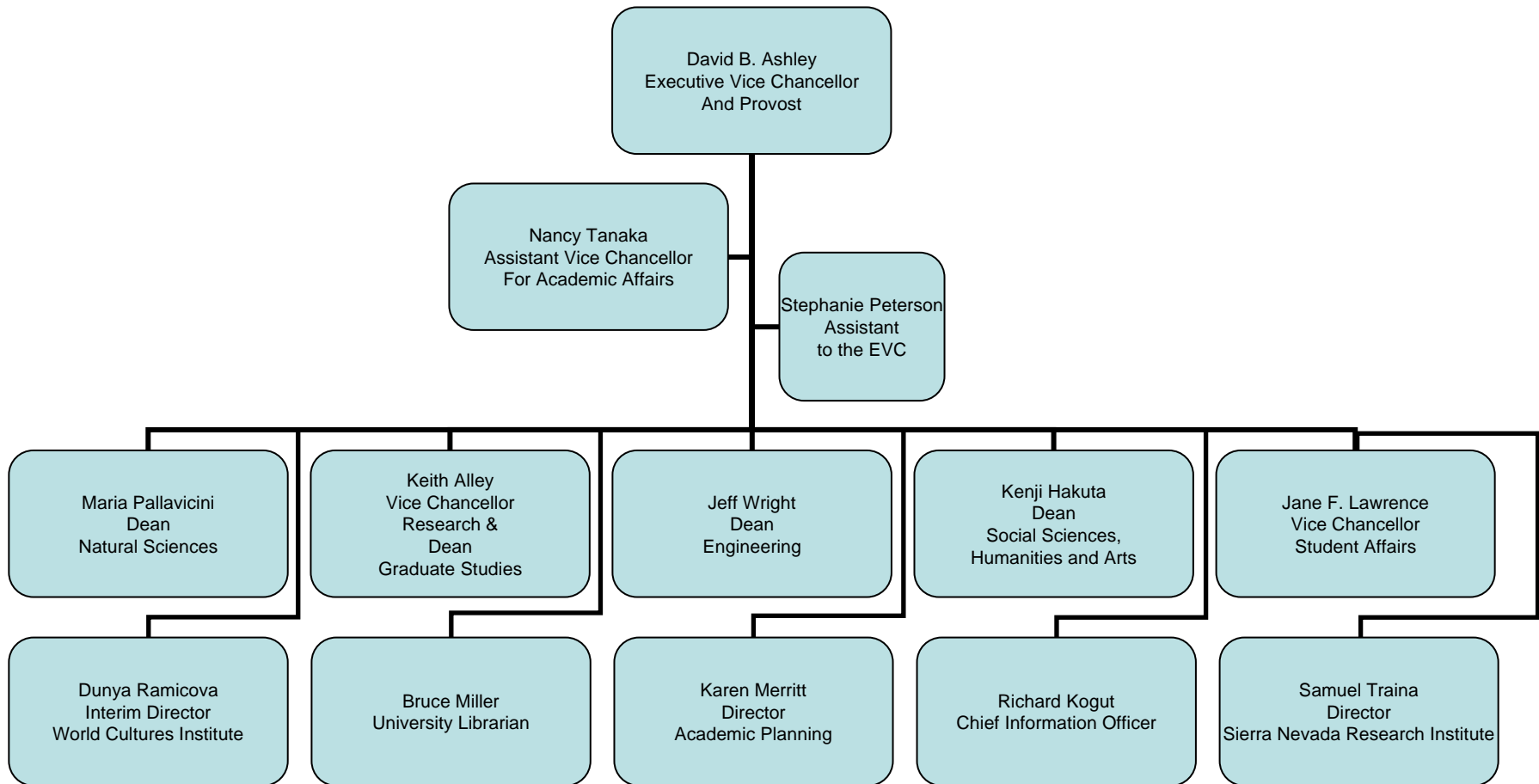
October 2005

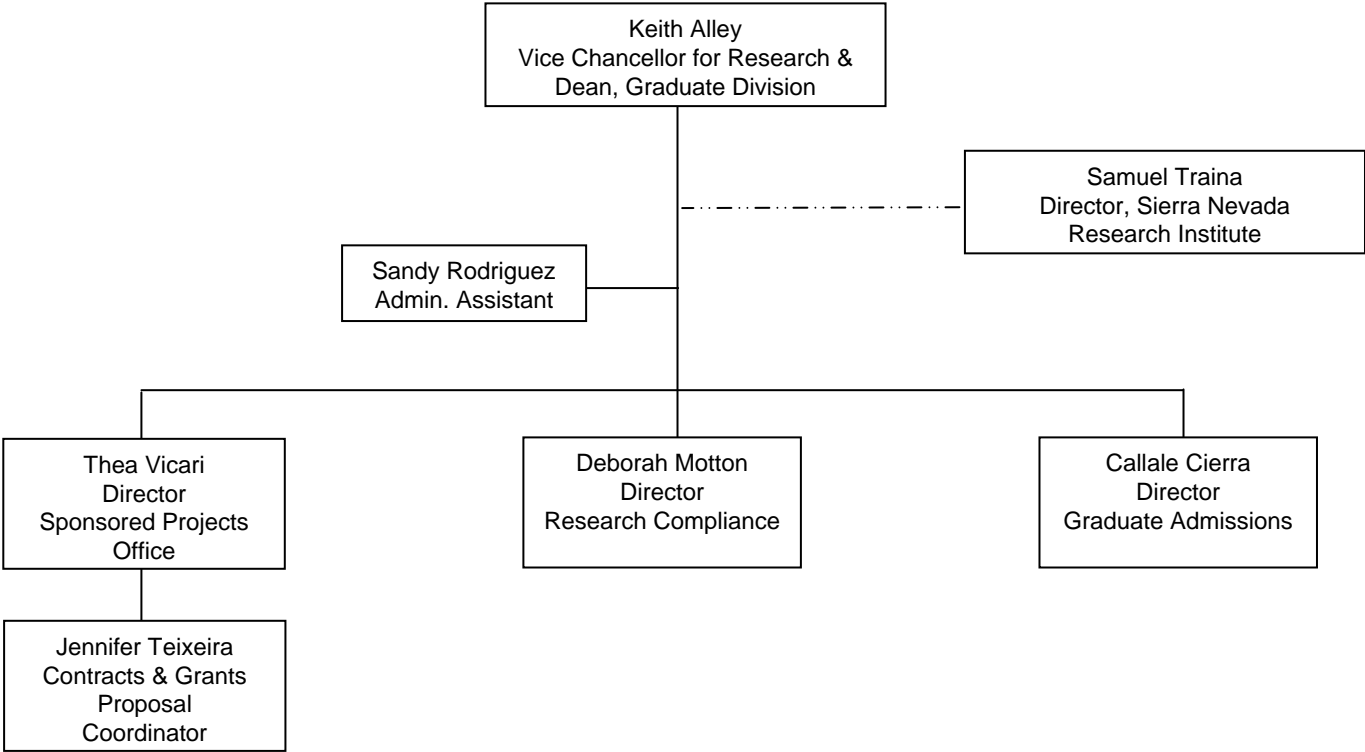


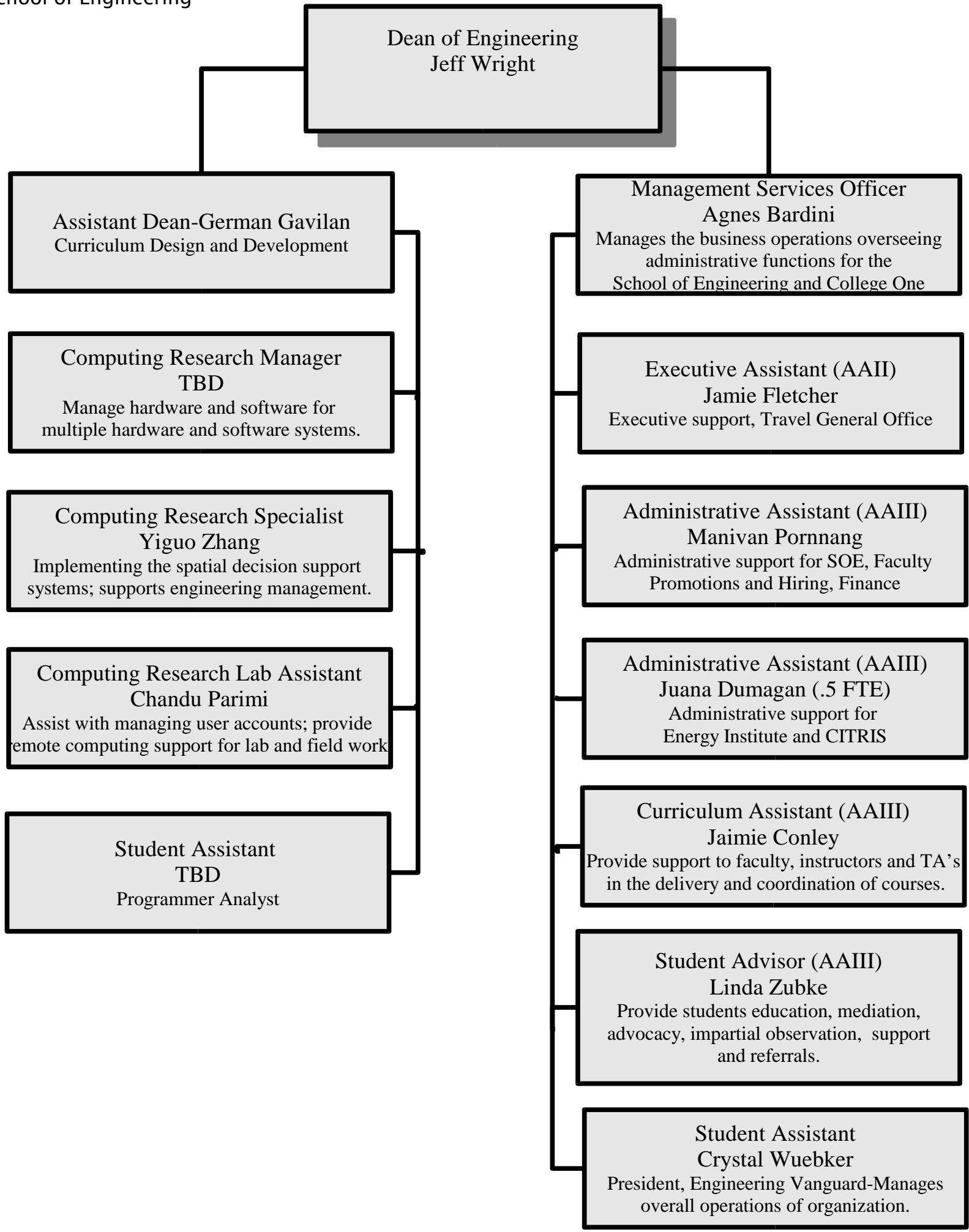


Attachment 1e

University of California, Merced  
Office of Executive Vice Chancellor & Provost  
November 2005





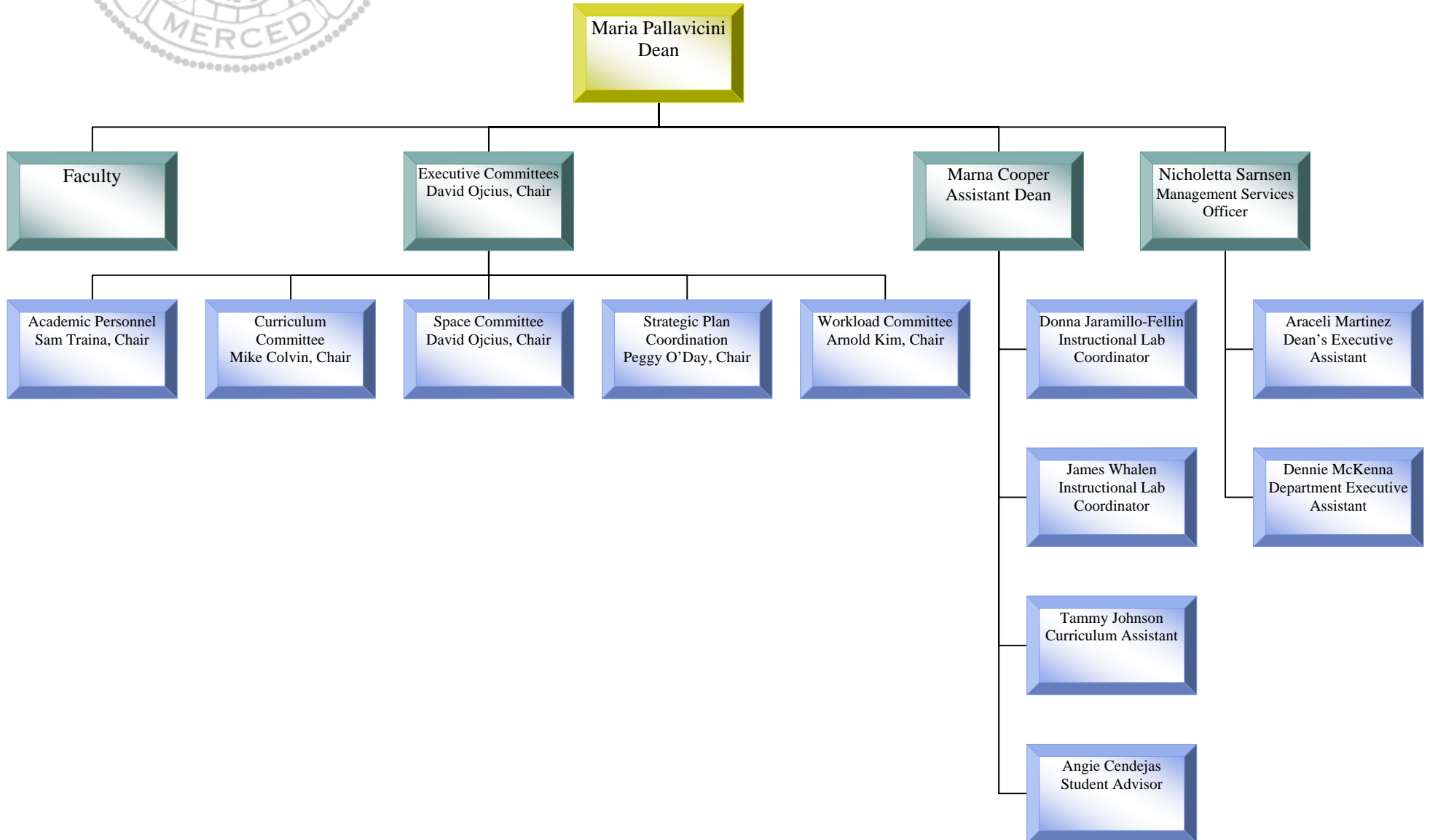




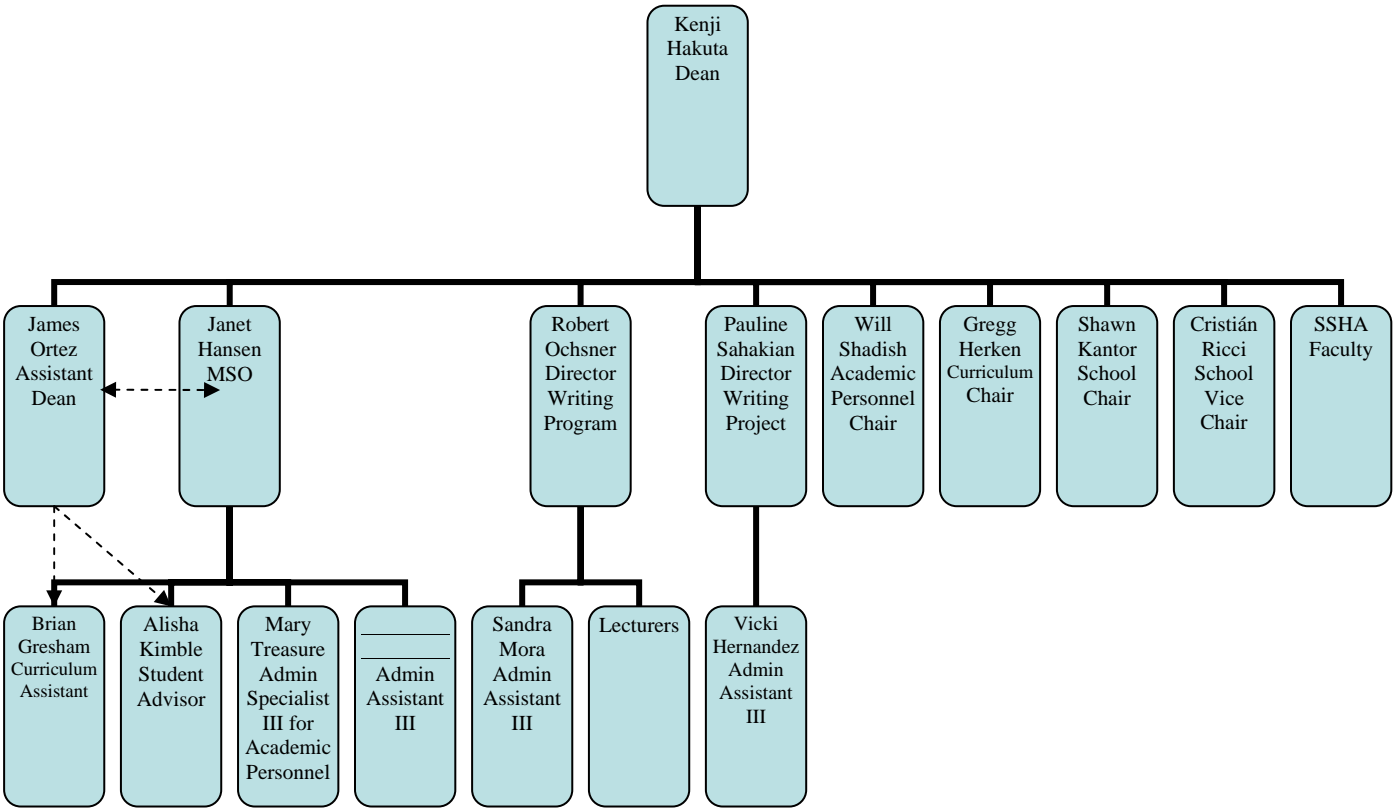
# UNIVERSITY OF CALIFORNIA, MERCED

## *School of Natural Sciences*

### *Organizational Chart*



# School of Social Sciences, Humanities, and Arts Organizational Chart



# UC Merced University Relations

---

